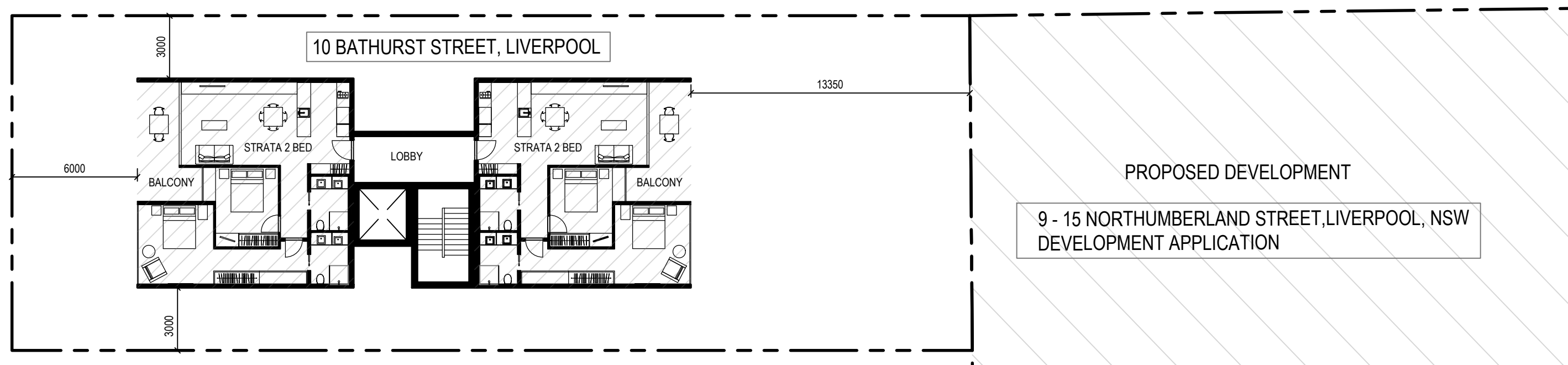
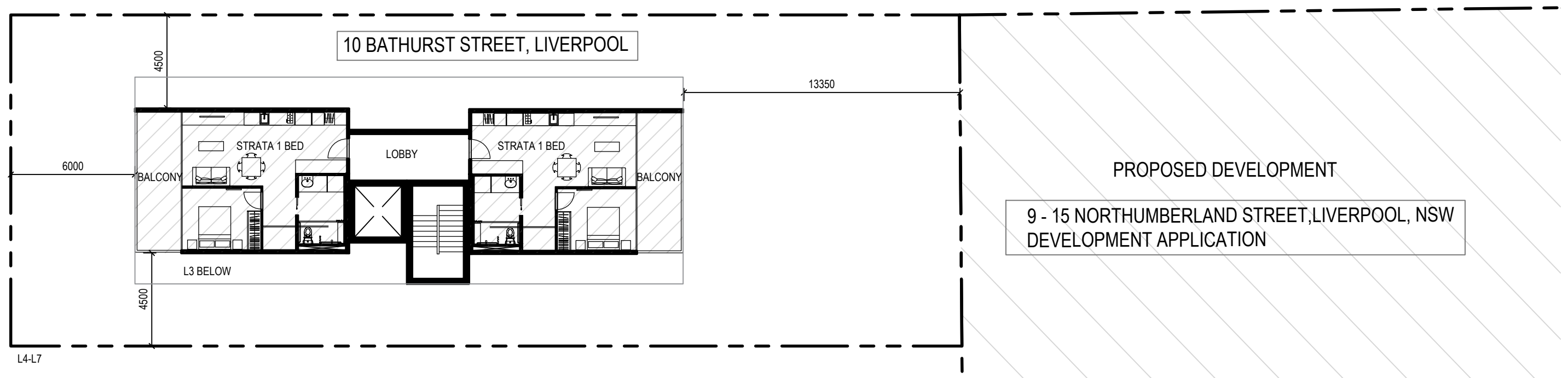


GROUND FLOOR (1:500)



L1-L3 (1:200)





L4-L7 (1:200)

LEP CONTROLS

FSR = 2:1

SITE AREA = 720 M2

ALLOWABLE GFA = 1440 M2

POTENTIAL YIELDING @ 10 BATHURST STREET LIVERPOOL

HEIGHT LIMIT = 35 M

PROPOSED NO OF STOREYS = 8+BASEMENT

PROPOSED UNITS = 7 X 2-BED UNITS + 8 X 1-BED UNITS

PROPOSED HEIGHT = 24.8M

FSR = 1.4:1

ADG CONTROLS

CROSS VENT = 100%

SOLAR ACCESS = AT LEAST 70% OF APARTMENTS IN A BUILDING RECEIVE A

MINIMUM OF 2 HOURS DIRECT SUNLIGHT BETWEEN 9 AM AND 3 PM AT MID WINTER

ADG COMPLIANCE PROPOSED DEVELOPMENT

UNITS ACHIEVING MIN. 2HRS SUNLIGHT = 11 (73%) COMPLIES

TOTAL NO. OF UNITS = 15

